

High School #2

Location: Near Northpointe Blvd. and the extension of Northpointe Lane

Architect: PBK

Construction Allocation: \$62 million



Architect's Rendering

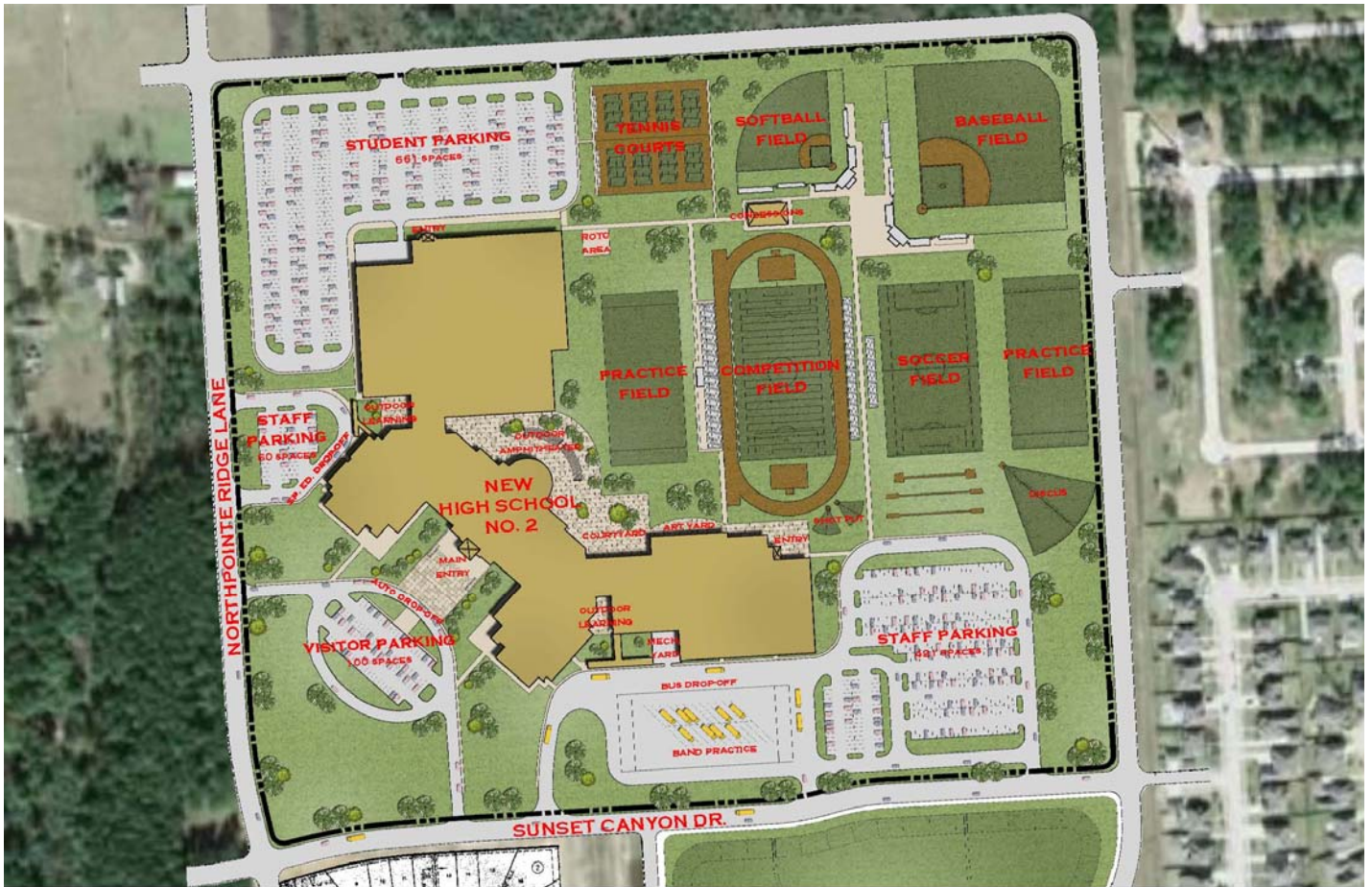
Located near Northpointe Blvd. and the future extension of Northpointe Lane, Tomball ISD's second high school will serve approximately 2,200 students in a two story 350,000 square foot building. The arched entry featured in the preliminary schematic design was inspired by the architecture of the former Cherry Street school, which was built in 1936.

The front portion of the new high school will house the main administrative offices, which are located near the library. The building is organized by departments. Each department also contains an administrative suite that includes offices for counselors and an assistant principal. The design also features space for the cafeteria, clinic, science labs, drill team room and a fine arts wing, which includes band, orchestra and choir rooms and an auditorium. The career and technology department will house animal science, health science and the technology classrooms. The athletics department will be housed in the school building and will be adjacent to the career and technology department.

This campus is scheduled to open for the 2011-2012 school year.

(To see an aerial view of the campus site, please scroll down to page two.)

High School #2 Aerial Site Plan



###